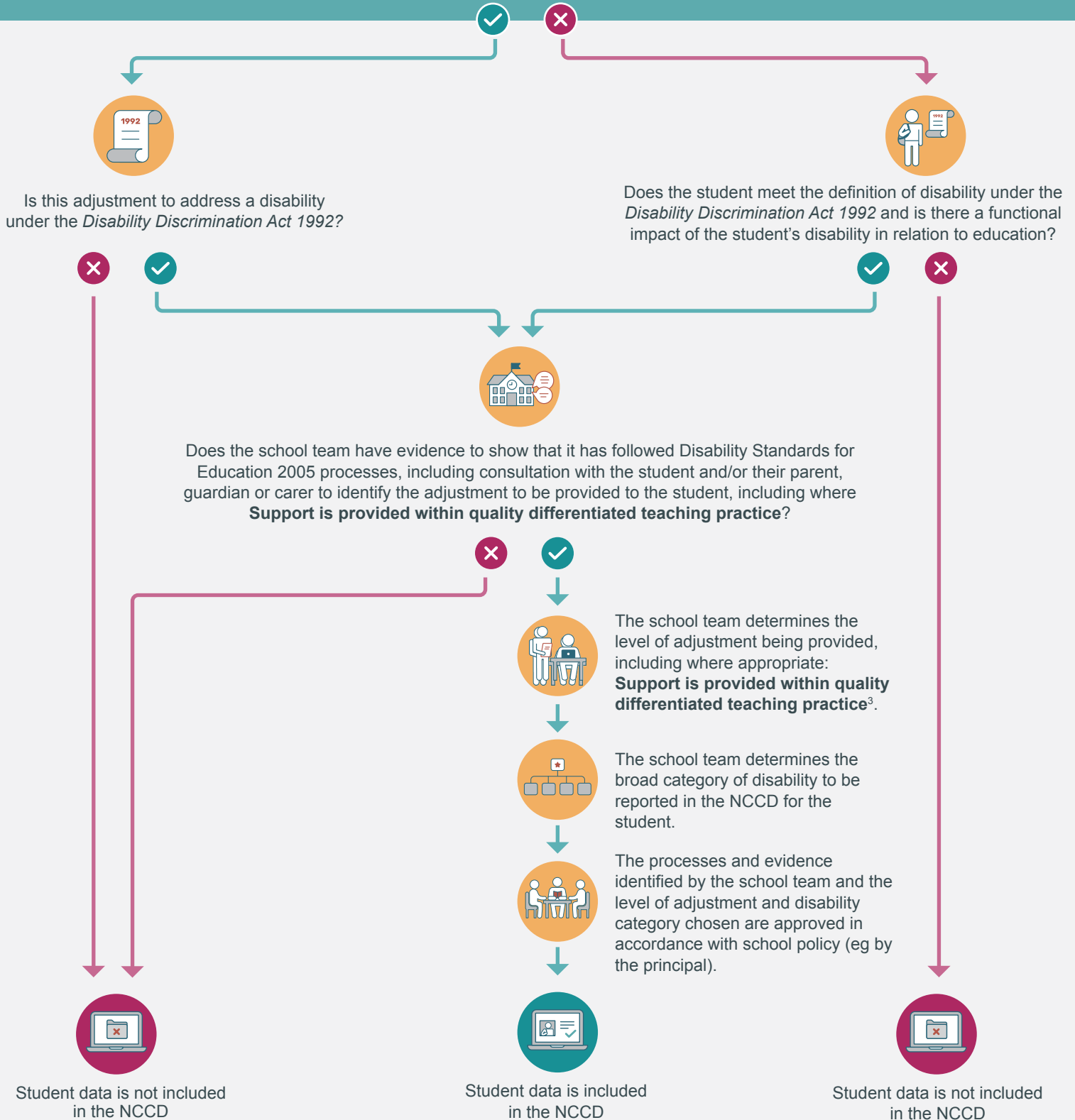


# The NCCD model diagram

Throughout the school year school teams use evidence, including discussions with parents, guardians and carers, to inform decisions about the adjustments that they make for students with disability.

For the NCCD you should have evidence that shows you have made adjustments<sup>1</sup> or incorporated support within quality differentiated teaching practice for each student. This should cover a minimum period of 6 weeks of school education (excluding school holiday periods) in the 12 months preceding the NCCD.<sup>2</sup>

## Is the student provided with an adjustment?



<sup>1</sup> For information about adjustments see the resource Strategies to support decision-making on the NCCD Portal.

<sup>2</sup> The NCCD Portal has information on the 6-week period.

<sup>3</sup> For information on the four levels of adjustment see the resource Selecting the level of adjustment on the NCCD Portal.